

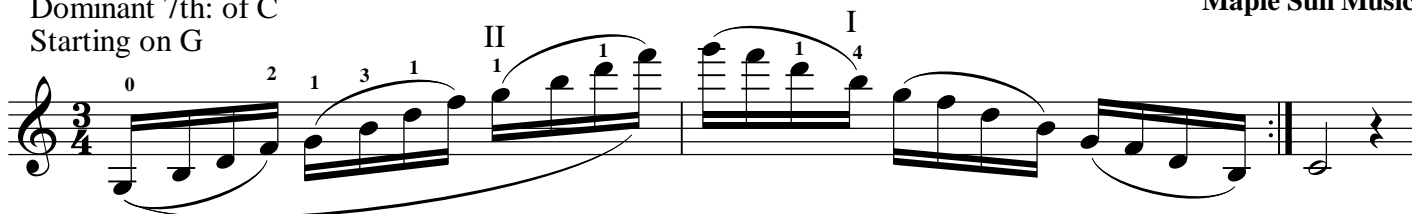


3-Octave Dominant 7th

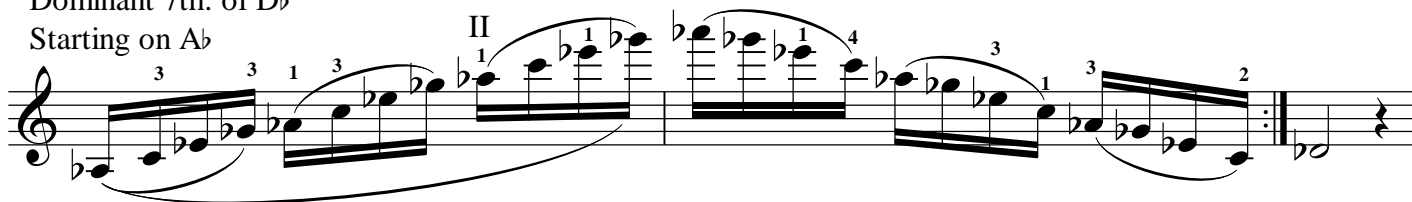
4 and 12 slurred - always end on Tonic

Notated & Edited by
Maple Sun Music

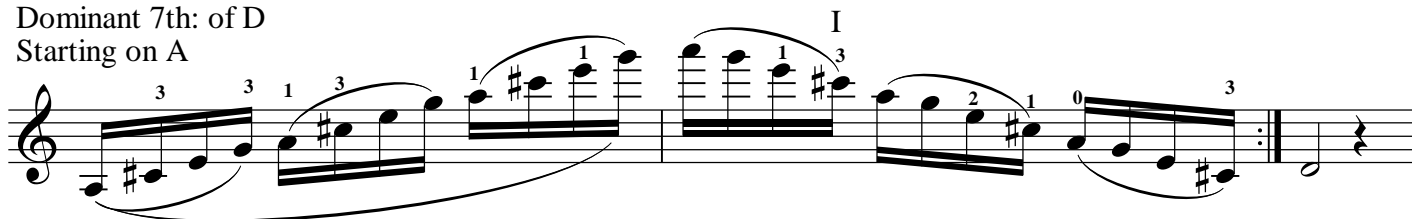
Dominant 7th: of C
Starting on G



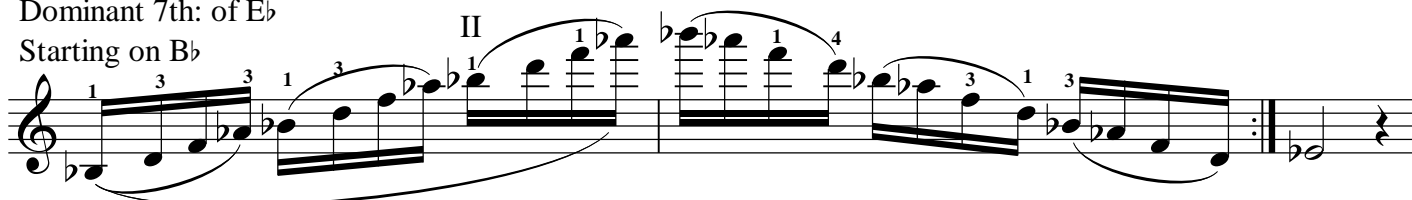
Dominant 7th: of D \flat
Starting on A \flat



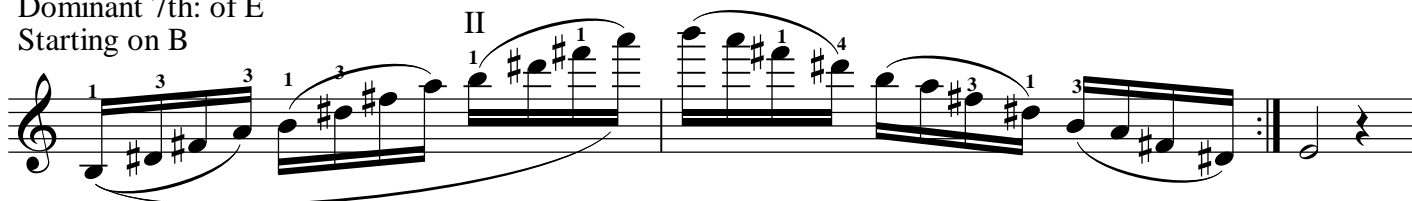
Dominant 7th: of D
Starting on A



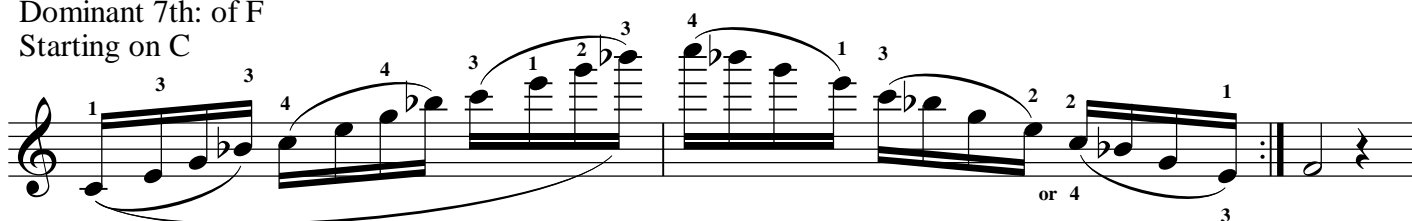
Dominant 7th: of E \flat
Starting on B \flat



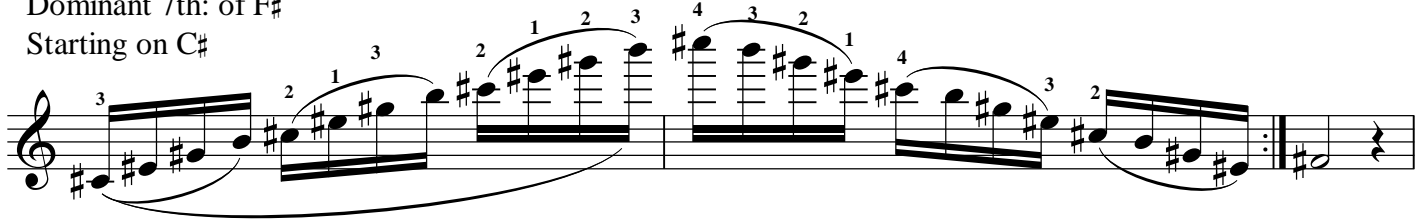
Dominant 7th: of E
Starting on B



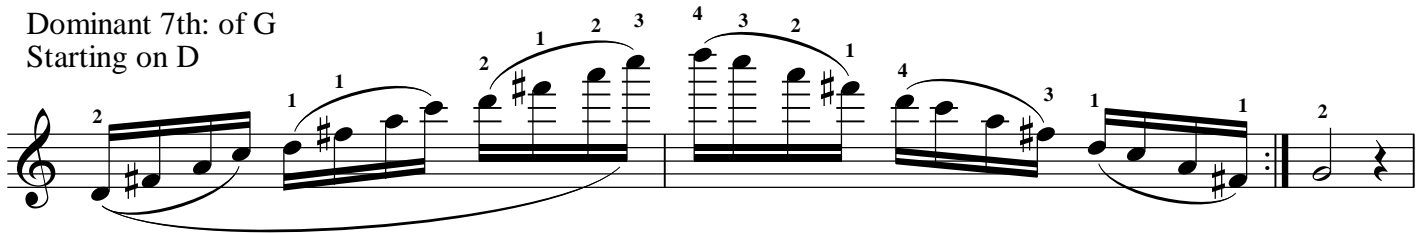
Dominant 7th: of F
Starting on C



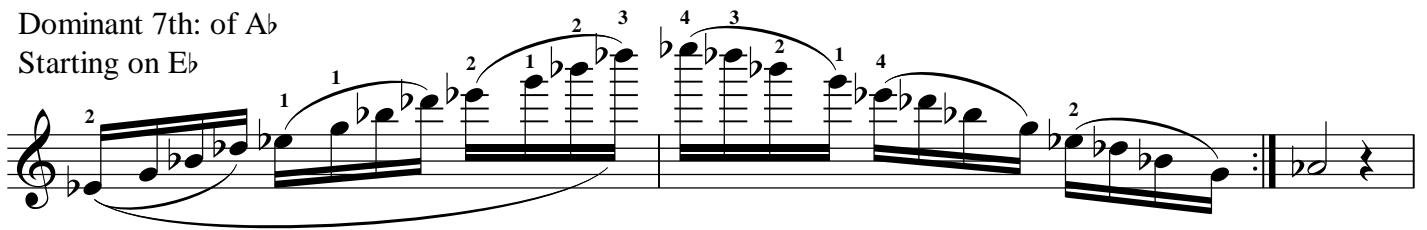
Dominant 7th: of F#
Starting on C#



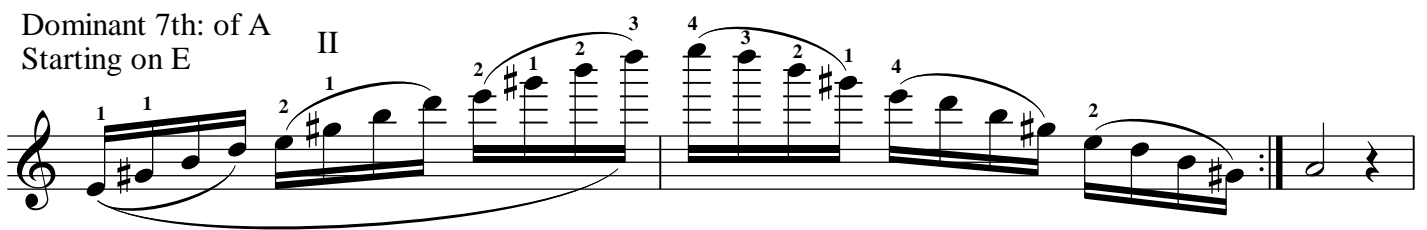
Dominant 7th: of G
Starting on D



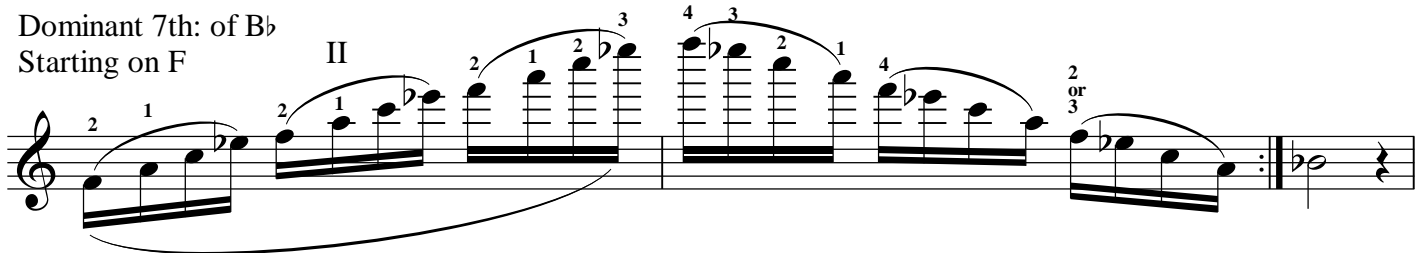
Dominant 7th: of A \flat
Starting on E \flat



Dominant 7th: of A
Starting on E



Dominant 7th: of B \flat
Starting on F



Dominant 7th: of B
Starting on F#

